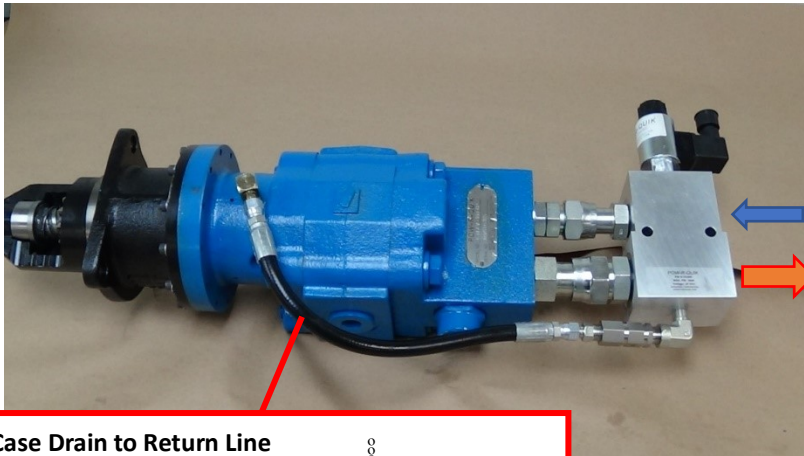


Installation Instructions

Universal Hydraulic Starter HSCV 360 (rear ports, dual ports, also older versions HSV/HS 360)

1. HSCV360 Starter with PRQ Electric ON/OFF valve mounted via rear ports



P/N 6-HSCV RH1 DP PQS102S (24Vdc)

P/N 6-HSCV RH1 DP PQS102T (12Vdc)

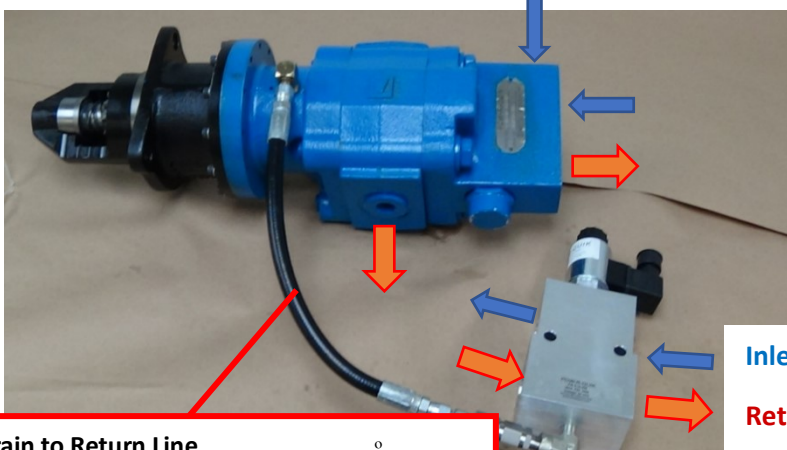
Inlet - #12 ORB

Return - #16 ORB

Case Drain to Return Line

¼" hose (17" length) with ¼ NPT 90deg fittings at both ends – supplied by the customer

2. HSCV360 Starter with PRQ Electric ON/OFF valve mounted remotely



Starter:

P/N 6-HSCV RH1 DP PQS102

ON/OFF Valve:

P/N 6-10-620 (24Vdc)

P/N 6-10-620 (12Vdc)

Note: rear or side ports (or mix) of the starter can be used to connect with the ON/OFF valve

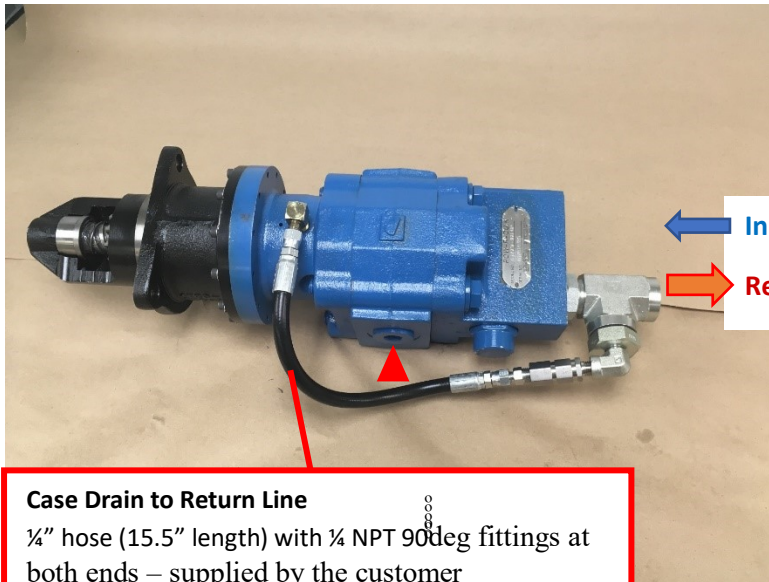
Inlet - #12 ORB

Return - #16 ORB

Case Drain to Return Line

¼" hose (length: as needed) with ¼ NPT 90deg fittings at both ends – supplied by the customer

3. HSCV360 Starter without PRQ Electric ON/OFF



Starter:
P/N 6-HSCV RH1 DP PQS102

Inlet - #12 ORB

Return - #16 ORB

▲ The 'T' fitting shown at the rear can be used alternatively with the side port return

Case Drain to Return Line

¼" hose (15.5" length) with ¼ NPT 90deg fittings at both ends – supplied by the customer

'T' fitting supplied by the customer

Note: Proper hydraulic clamps should be used for securing the supply and the return hoses.

The clamps must prevent any hose movement at any time. The clamps should be spaced every 5-8 feet, depending on the hose size; however, the first clamp must be with 6" from the starter/valve ports (supply and return lines)

General Installation Recommendations:

- Inlet hose size: 1"
- Outlet hose size: 1.25" - 1.5"
- All fittings and plugs should be tightened to the appropriate torque prescribed by the fitting manufacturer
- Case drain hose pressure rating: same rating as the return line
- If the case drain line can be brought directly to the truck reservoir/PTO, this method is preferred.